



Dukes Sustainability Journey 24/25

Autumn term update

Carbon net zero journey update oct24



- Operations – efficiency and reduction
- Embedding sustainability into the curriculum
- Sustainable working culture



Targets - Carbon net zero 2050

2024 annual report targets;

- Water 5% reduction by 2026/27
- Waste 80% avoidance to landfill by 2030
- Paper use 80% recycled by 2030
- Staff upskilling – 75% of staff completion of sustainability foundation e-learning modules by summer term 2025
- Net zero/ climate action plans – 100% by 2025

Dukes sustainability strategy & approach

Approved by the Board on 4 April 2024



Sustainability Policy

We are committed to sustainable development, environmental protection, social responsibility and ethical business practices. We are committed to the highest standards of environmental protection and to the highest standards of social responsibility and ethical business practices. We are committed to the highest standards of environmental protection and to the highest standards of social responsibility and ethical business practices.

Our Approach

- **Environmental** – We will continue to reduce our carbon footprint and improve our energy efficiency.
- **Engagement** – We will continue to engage our staff, our suppliers, our customers and the wider community.
- **Communication** – We will continue to communicate our sustainability performance and our commitment to sustainable development.

Ensuring the quality of education, and learning and development opportunities we provide to our staff and our students is our primary focus. We will continue to invest in our staff and our students to ensure they have the skills and knowledge to succeed in the 21st century.

- **Health and wellbeing** – We will continue to invest in our staff and our students to ensure they have the skills and knowledge to succeed in the 21st century.
- **Responsible procurement and operations** – We will continue to invest in our staff and our students to ensure they have the skills and knowledge to succeed in the 21st century.
- **Partnerships** – We will continue to invest in our staff and our students to ensure they have the skills and knowledge to succeed in the 21st century.
- **Working sustainably by education** – We will continue to invest in our staff and our students to ensure they have the skills and knowledge to succeed in the 21st century.

Our commitment to sustainable development is a key part of our business strategy. We will continue to invest in our staff and our students to ensure they have the skills and knowledge to succeed in the 21st century.

- 1. Operational excellence
- 2. Innovation and growth
- 3. Quality of service
- 4. Financial performance
- 5. Environmental sustainability

This policy is subject to our annual review. We will continue to invest in our staff and our students to ensure they have the skills and knowledge to succeed in the 21st century.

The Group is committed to the highest standards of environmental protection and to the highest standards of social responsibility and ethical business practices. We are committed to the highest standards of environmental protection and to the highest standards of social responsibility and ethical business practices.

This policy will be reviewed on an annual basis by the Board. The policy will be approved on an annual basis by the Board. This policy will be approved on an annual basis by the Board.

Carbon management

SETTINGS 2024/2025 CHECKLIST

- Energy portal access and use
- Waste and water contracts and volumes
- Sustainability plan
- Sustainability policy

We are Planet Mark Certified

Energy consumption in kWh

Waste

59% Recycled

Waste to Landfill: 37% / 131 tonnes

Waste to Energy: 33,000 / 1,717 tonnes

Waste to Landfill: 26,000 / 1,176 tonnes

Waste to Energy: 22,750 / 1,030 tonnes

Waste to Landfill: 236 / 20 tonnes

Waste to Energy: 14,300 / 1,182 tonnes

Carbon tracker

CONCEPT ONLY

Energy & water portal

fullpower

Dukes Education

System Total Last Month

Total Energy Consumed: 450,270.00 kWh

Electricity Consumed: 35,400.00 kWh

Gas Consumed: 1,100.00 kWh

CO2 Emission: 1,100.00 kgCO2

Cost Centres Last Month

Largest Cost Centre: Dukes Education

Cost Last Month: £ 33,727.40

Smallest Cost Centre: Dukes Education

Cost Last Month: £ 82,727.40

UTILITIES Last Month

Largest Utility: Dukes Education

Consumption Last Month: 294,170.00 kWh

Smallest Utility: Dukes Education

Consumption Last Month: 0.00 kWh

ENERGY LIVE/ WATER TO ADD

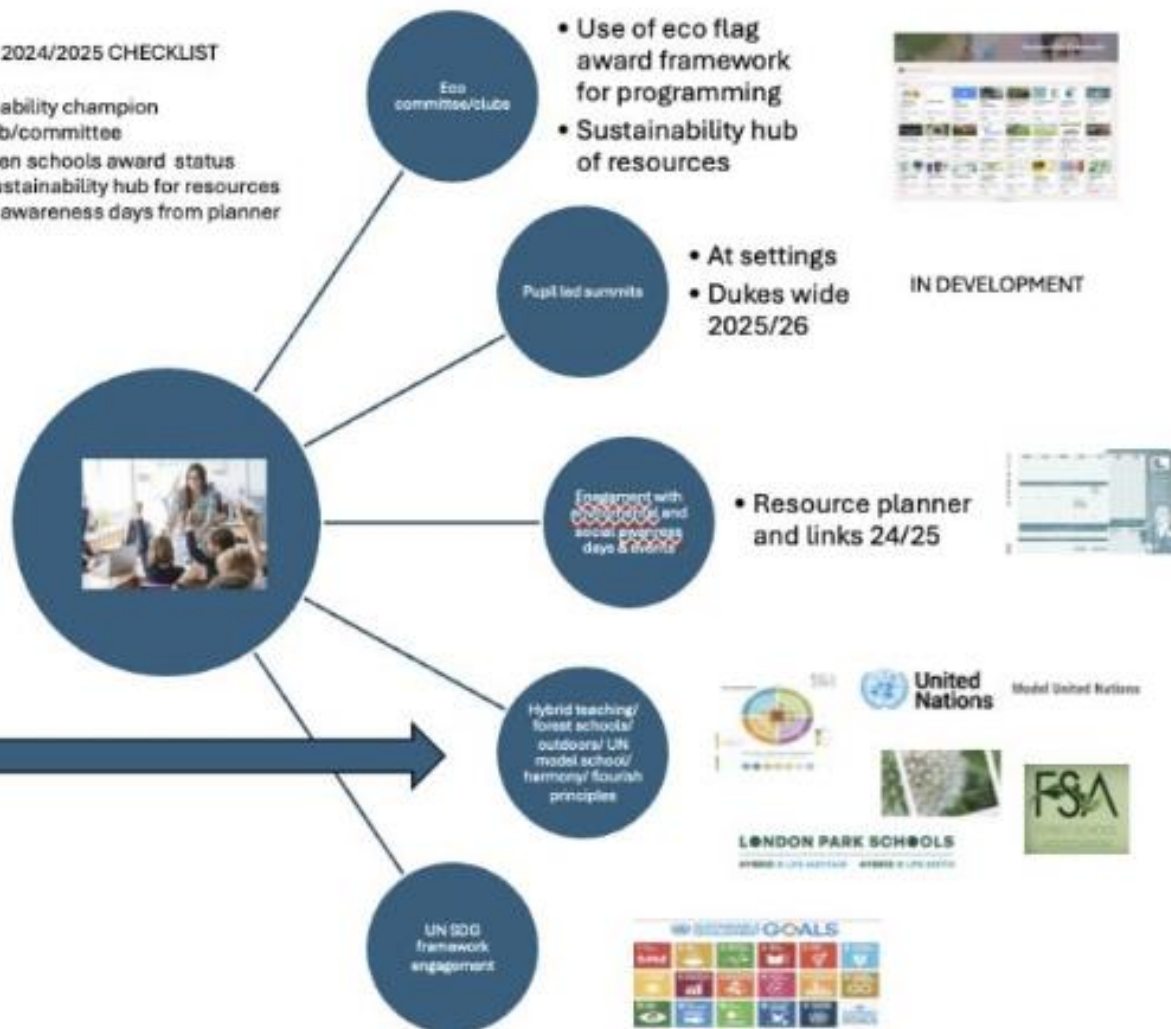
Energy	- Green tariff, Finical savings, Portal live - To do smart meters/ efficiency saving plans
Waste	-Plan to meet 2026 legislation -supplier review
Water	-supplier review -usage portal
IT	-supplier review/ policies - end of life plan/ ££
Paper/stationary	Supplier review Recycled policy
Catering	Supplier review Savings ££
Transport	Supplier review Savings ££

Engagement - Embedding sustainability into teaching

White paper report in research to review all current options and give future direction published 2025

SETTINGS 2024/2025 CHECKLIST

- ✔ Sustainability champion
- ✔ Eco club/committee
- ✔ Eco green schools award status
- ✔ Follo sustainability hub for resources
- ✔ Embed awareness days from planner



Support and resources



SEPTEMBER 2024

DID YOU KNOW? Switching to a reusable coffee cup can save landfill space equivalent to the height of a two-storey house annually.

OCTOBER 2024

DID YOU KNOW? Devices like mobile phones or laptops left on standby can account for 10-15% of energy bills.



Sustainability Community

36 items

- Clean Air Day Resources 20th June 2024
- CREST Awards
- Dukes sustainability strategy and...
- Dukes Sustainability Week Resource...
- Earthworm day 21st Oct survey and ID worksheets
- Eco Action Games - Resources
- Eco Nurseries Information - 7 steps
- Eco Schools Award - short clip on 7 steps
- Welcome to FSC Forest Week 2024
- Green Tree Schools Award
- International mountain day 11th dec 24
- International Volunteer Day 5th dec 24
- LittledukesconferenceMay24Sustainability
- Love Parks 2024 | Keep Britain Tidy Resources
- Ministry of Eco Education Teaching Resources
- National Tree Week
- Nature Facts and resources about Trees
- No Disposable Cups Day 4th Oct 24
- Plastic Free July 2024 Resources
- Recycle Week 2024 14-20 October 2024
- RSPB Birdwatch Jan 25
- School Sustainability Bingo Game
- Show Your Stripes
- Sustainability Calendar 2024 /2025



An individual taking steps is progress.
But a community taking steps together leads to real change.





<https://vimeo.com/shootthecompany/review/1014853973/6c66a143ec>

An individual taking steps is progress.
But a community taking steps together leads to real change.

Checklist 2024/2025

- ✓ Sustainability champion
- ✓ Eco club/committee – use of eco schools framework
- ✓ Sustainability SLT item
- ✓ Sustainability policy and plan
- ✓ Follow sustainability hub for resources
- ✓ Embed awareness days from the planner
- ✓ Staff to complete sustainability e-learning modules
- ✓ Webpage and post per half term
- ✓ Energy portal access and use
- ✓ Other supply chains review and management



Dukes
EDUCATION

